

The Parochial Church Council St. Margaret's Church, Betley



Contents

- ❖ **Review of the Year**
- ❖ **Electoral Roll**
- ❖ **Financial Review and Reserves Policy**
- ❖ **Wardens' Report**
- ❖ **Church Activities**
- ❖ **Structure, Governance and Management**
- ❖ **Administrative Information**

Presented at the Annual Vestry and
Parochial Church Council Meeting,
Sunday 26th April 2020

Parochial Church Council of St. Margaret's, Betley

ANNUAL REPORT-2019/20

To be presented to Annual Parochial Church Meeting

Contents

Review of the Year

Electoral Roll

Financial Review incl. Reserves Policy

Wardens' Report

Reports of Activities:

Celebrating Christ's love

Deanery Synod
Living Streams
Church Music
The Bellringers
The Reading Room

Growing Christ's love

Earlybirds
Praise and Play
Sunday Youth Group
Betley School
Fellowship Groups

Sharing Christ's love

Betley Parish News
St. Margaret's Website
St. Margaret's Facebook
The Foodbank
Charitable Giving
St. Margaret's Lunches
Marriage Support
Alpha

Structure, Governance and Management

Administrative Information

www.saintmargarets.co.uk

REVIEW OF THE YEAR 2019/20

St. Margaret's Church has continued to provide a wide variety of public worship and opportunities for spiritual development for both new and established Christians throughout 2019. Although the pattern continues in a similar way to previous years, we endeavour to introduce changes and do things a little differently where appropriate to keep things fresh, and provide new challenges and opportunities. It is true to say that we have a strong team of ordained and licensed lay ministers as well as informal ministers, all of whom are committed and work tirelessly as a team to promote the interests and work of God's Kingdom throughout the Parish.

Our Incumbent, Peter Chantry, whom we share in plurality with our sister Parish of All Saint's, Madeley, leads the Ministerial Team, which this year has been blessed by the addition of a Curate in Training Revd. John Beswick Pallister. John's enthusiasm and energy has complemented Peter's leadership; his wise guidance and support of Christian development in the Parish has been appreciated.

Work of the PCC.

St. Margaret's PCC has responsibility for co-operating with the Incumbent to promote the Ministry and Mission of the Christian Church, including pastoral, evangelical, ecumenical and social activities within the Ecclesiastical Parish. It also has responsibility for St. Margaret's Church and the Reading Room.

The PCC has met on 6 occasions in the year to February 2020 for full formal meetings with an average attendance of 88%. All meetings have been structured and focused on the PCC's responsibilities for Mission and Ministry activities, together with finance, buildings, fabric, health and safety and safeguarding and resources. Approved Minutes of meetings have been displayed in Church.

Priorities during the past year have been: -

- The review and updating of the Mission Action Plan (MAP) and monitoring progress on agreed activities.
- Overseeing worship and spiritual developments through the Ministry Team
- Reviewing and organising special services
- Updating Health & Safety and Protection of Young and Vulnerable People policies
- Continuing awareness of EDPR issues.
- Achieving Dementia Friendly Status

Other activities overseen by the PCC and its various sub-groups during 2019 have been: -

Mission

- The Early Birds Sunday School has continued to be well supported and led by a team of dedicated Leaders. As always the congregation enjoys seeing what the children have made and hearing what they have learned about our faith, at the end of Holy Communion services. A special end to the worship.
- A further Alpha course (16th) commenced in January 2020 and is the 7th held jointly with All Saint's, Madeley.
- The PCC supported and promoted 4 Charitable Giving Sundays; St. Luke's Hospice, Christian Aid, Sanctus (a Charity supporting refugees in Shelton, Stoke-on-Trent) and The Church of England Children's Society. Collection of food for distribution at the local Food Bank continues. A total of 1347 kgs in 2019 was donated. (1146kg in 2018). This equates to 3000 meals.

- A close working relationship, providing support and collaboration was maintained with Betley School. Weekly assembly services were held in Church, led alternately by the Vicar and Curate, as well as special services to mark major festivals. Sadly the arrangements with the school choir attending Family Services occasionally, has not continued due to changes in staff at school. The school children helped decorate the Church Christmas Tree as well as making the Christingles and preparing flowers for distribution on Mothering Sunday.
- The Reading Room continued to provide an active Christian presence in the Village and is a valuable support facility between the Church and wider community. The PCC is very appreciative of the efforts of the Management Committee and the many volunteers and helpers for their hard work and commitment.
- Curate John has set up a Youth Group (11+ yrs.) in the Reading Room. The group meets twice a month for fun, friendship and a little learning and to hear from an occasional speaker. This is a joint venture with All Saints.
- Curate John planned and led an Old Testament Study Day in October. Members of the congregation have expressed a desire to learn more about the Old Testament and this will continue with Sunday readings.

Ministry

- The Crib Service was held again on Christmas Eve in a 'Stable' at Betley Court Farm courtesy of Mr. & Mrs. Frank Speed. It was very well supported, the stewards lost count at 250. Vicar Peter included elements from 2018 and some new twists. The Angel was stranded on her cloud, but didn't complain and again we were delighted to have a real baby.
- A Wedding Preparation Course was held jointly with All Saint's for couples being married in 2019.
- St. Margaret's Lunches have continued to be held on a monthly basis in the Reading Room to provide friendship and fellowship between parishioners who live on their own. These are very popular events as evidenced by the happy chatter. Grateful thanks are given to all those involved in providing the lunches.
- The PCC's July meeting had a special focus on Growing Faith after the business meeting.
- Jean Ainsworth was licensed as a Reader in September. Jean has joined the Ministry Team.
- Jim Cartlidge continues with his training for ordained ministry, but is not worshipping at Betley at present, as he is seconded to an urban church. Linda Hough continues to act as an informal lay worship leader. The PCC is supporting Ann and Nick Deavall, who are training for Lay Readership. They have all participated in leading services and preaching.
- Curate John was priested 22nd July at Stoke Minster; members of both congregations were present in support.
- A Confirmation Service with candidates from St. Margaret's and All Saints' was held on Palm Sunday evening.
- In 2019 there were 2 (2) Marriages, 6 (4) Baptisms and 5 (7) Funeral services in church with 3 held at the Crematorium; 5 interment of ashes only. Figures in brackets are for 2018. The marked reduction in some of these services in recent years has had an impact on Church income.
- The schedule of regular Services has continued as per the previous year.

- The average Sunday Service attendance at 9.30 am, excluding those Services which had a Baptism, was 54 + 7 children (53). If Baptism services are included attendance was 57 (55). Very high attendances of 90 -100+ (including children) were recorded at Easter, Harvest, Remembrance, Christingle, Crib Service (250++), Carol Service (200) .
- The three very well established Fellowship Groups continued to meet regularly to explore and share their Christian faith and all Groups met together in July and at Christmas.

Further details on many of the items contained in this Report are to be found in individual activity reports which follow.

Priorities for 2020.

- Develop the Action Plan for the Parish Vision “to celebrate Christ’s love, grow in Christ’s love, share Christ’s love and welcome and encourage others in following Jesus Christ “.
- Develop our Ministry to those who live with dementia and other disabilities and to their carers.
- A scheme to renew all lighting and electrical wiring in the Church will be progressed. It is hoped to get a design and firm quote in the near future. Progress will be dependent on costs, although some essential rewiring should take place.
- To undertake urgent repairs to areas of the roof identified at the Quinquennial Inspection
- Finances are under close scrutiny. There is some concern about falling income in the light of rising costs. A Finance Group will meet to consider the way forward.
- A Communications Group has been formed of all those Church members involved in publicity and communications: Parish Magazine Editors, Facebook Coordinator, Pew Sheet Editor, Webmaster, Notice Board Manager.
- Joint Parish Weekend Away with Madeley in September at Cloverley Hall

Jennifer Walton, Lay Chairman

ELECTORAL ROLL

At the end of March 2019 there were 98 people on the Electoral Roll.

Before this APCM and in accordance with the Church Representation Rules, St Margaret’s revised the church Electoral Roll.

There are now members on the Electoral Roll

Terry Goldstraw, Electoral Roll Officer

2019 FINANCIAL REVIEW

2019 Financial Review

The accompanying Financial Statements illustrate the movement in each of the PCC Funds in respect of the year ended 31st December 2019. The opening and closing balances of each Fund are shown on the Statement of Assets and Liabilities. **End of year funds totalled £96,166.28** compared with £93,502.54 the previous year. The following additional notes are of particular relevance *(figures in £ only)*:

TOTAL INCOME

- **Planned Giving** at £37,157 was **£2,000 down** on the previous year.
- **General Collections** at £3,347 were **£470 up** on the previous year.
- **Collections at Baptisms, Funerals and Weddings** at £31 were **£660 down** on the previous year.
- **Gift Aid Tax Recovered** for General Fund at £10,162 was **£1,247 up** on the previous year.
- **Net income from fees** (weddings, funerals etc) at £3,791 was **£1,273 down** on the previous year.
- **Legacies** – A Legacy of £4,000 was received during the year and was allocated to the Special Projects Fund.

General Fund

Expenses were again controlled as well as possible during the year.

- **Church Running Expenses** at £3,804 were **£224 up** on the previous year..
- **Utility Bills (oil and electricity)** at £2,768 were **£673 up** on the previous year.
- **Church Maintenance Costs** at £2,313 were **£320 down** on the previous year.
- **Upkeep of Services** at £1,256 was **£178 up** on the previous year.
- **Sundry Expenditure Costs** at £1,156 were **£192 down** on the previous year.
- **Local Mission & Outreach Costs** at £287 were **£301 down** on the previous year.
- **Parish Share payments** of £37,539 (2018 £36,623) were made during the year. The Parish Share was paid fully to date at the end of 2019 and obligations for 2020 amount to £38,478.
- The General Fund showed a **revenue surplus of only £581 for the year** so an end of year transfer to Special Projects Fund in accordance with the PCC's Reserves Policy has not been possible (£2018 - £2,000).

Churchyard Maintenance Fund

- Total costs of upkeep and maintenance of the churchyard amounted to £5,188. Grants of £3,108 were received by the fund (2018 £3,199). A transfer of £1,600 from Magazine Fund enabled the fund to carry forward a balance of £1,867 at the year end.

Church Fabric Fund

- The fund received a VAT refund of £427 from the LPOW Grant Scheme. Major repairs to the fire alarm system cost £1,458. The fund had an end of year balance of £6,910 (2018 - £7,126).

Flower Fund

The fund had an end of year balance of £316, an increase of £103 over the year.

Magazine Fund

- The Magazine Fund generated a surplus of income over production costs enabling a transfer of £1,600 to be made to the Churchyard Maintenance Fund (2018 £1,500) in accordance with PCC Reserves Policy. The end of year balance of £2,746 reflects receipt of advertising income and subscriptions for 2020. The Fund is budgeted to make a surplus in 2020.

Special Projects Fund (Designated)

- The fund received a legacy of £4,000 and LPOW Vat reclaim of £243. Costs of £712 were incurred for the 2019 Quinquennial Report. A balance of £47,540 was carried forward (2018 £45,750).

- **Special Projects Fund (Restricted)**

This fund, which had a Nil balance at the end of the year, was utilised for all transactions relating to the stonework repairs and Church History Project funded by the Heritage Lottery Fund ("HLF"). The entire project was completed during the year and formally signed off by HLF. A transfer of £2,113 was made from Special Projects Fund (Designated) which represented the contribution to the project from PCC funds.

- **Reading Room Fund**

This Fund received room hire income of £621 from General Fund during the year (2018 £628). A surplus of £1290 was generated during the year and the fund carried forward a balance of £16,475. (2018 £15,185).

Reserves Policy

Throughout the year the PCC has been fully aware of its financial obligations and regular reports have been received from its Treasurer. It is PCC policy to invest its reserve funds with the CBF Church of England Deposit Fund or other UK financial institution approved by PCC. In accordance with prudent accounting guidelines its Reserves Policy is regularly reviewed by PCC. The end of year financial position was in line with the current Reserves Policy, a copy of which can be obtained by e-mail request from mike.rsmith@btinternet.com.

Ongoing Financial Position**Capital Funds**

2019 saw the completion of the planned stonework repairs and History Project largely funded by the Heritage Lottery Fund. In large part due to receipt of a legacy, the two capital funds were able to carry forward balances c£2k over those brought forward from the previous year. A major project to explore the installation of new lighting in church is being considered in 2020.

Revenue Funds

It was disappointing to note that the General Fund generated a small revenue deficit for the year. A formal budget for General Fund has been prepared for 2020 which will be considered by PCC and monitored throughout the year. The budget forecasts another challenging year where continuing efforts need to be made to optimise income whilst continuing a tight control over costs. The Treasurer will continue to monitor all income and expenditure trends on a monthly and cumulative basis with reports given at PCC meetings. The PCC expects to meet its financial obligations in 2020 and beyond although the financial challenges being faced continue to be well acknowledged.

End

WARDENS' FABRIC, GOODS AND ORNAMENTS REPORT 2019-20



INTERNAL

There have been no changes or additions to the interior of the Church.

The PCC is considering a complete rewiring of the Church and the introduction of a new lighting scheme in 2020/21. A proposal and costings are in hand at the time of writing. Work will go ahead subject to faculty and PCC approval as well as costings/finance.

EXTERNAL - BURIAL GROUNDS

Routine inspection of the headstones in both graveyards is now due. This will be done in the spring. Any unstable stones will be laid down.

Volunteers from the congregation have helped to keep the surroundings areas, graves and Church paths tidy. Grass cutting and general maintenance are carried out by a contractor, and the graveyards are in good order.

The new area of consecrated and prepared ground did not come into use as expected in 2019, but is ready to use during 2020 as required.

Necessary urgent repairs to the Church Roof identified at the Quinquennial Inspection of 2019, will be carried out as soon as possible. A contractor has been appointed

The railings round the old Churchyard are in a poor state.

GENERAL

The Flag Pole has been refurbished, and new ensigns acquired.

Full Health and Safety, and Safeguarding procedural reviews were carried out.

GOODS and ORNAMENTS

A silver standing paten and silver flagon – both mid 18th century, previously kept in a bank vault are now stored locally and securely, and insured appropriately.

To the best of our knowledge all other items and goods remain the same. It should be noted that the communion silverware in general use has become dented and distorted through use and needs some restoration work at some point.

The next quinquennial inspection is due in 2024

CHURCH ACTIVITIES

During 2019 we have continued to focus on what following Christ means in our individual lives and in the life of our Christian community.

The annual reports of Church Activities in the following pages demonstrate our Parish Vision in action.

Celebrating Christ's love

Deanery Synod
Living Streams
Church Music
The Bellringers
The Reading Room

Growing Christ's love

Earlybirds
Praise and Play
Young People and Families
Betley School
Fellowship Groups

Sharing Christ's love

Betley Parish News
St. Margaret's Website
St. Margaret's Facebook
The Foodbank
Charitable Giving
St Margaret's Lunches
Marriage Support
Alpha
Dementia Friendly Church

Representatives from all of the churches within the Newcastle Deanery meet three times each year and following a short update on deanery news proceed to welcoming a guest speaker and share an informal church service. Everyone is welcome to attend these 'open meetings' which is another opportunity for extended fellowship with our church family a different parish.

Here is a summary of this year's 'meetings' but for more detailed information speak to one of our elected Deanery Synod members: Helen Shorrock, Linda and Rick Hough, or vicar Peter. Copies of Minutes will be available in the file at the back of church together with presentation slides.



24th June 2019 at St Thomas', Kidsgrove

Reaching Young Disciples (the Generation Z) by Reverend Melanie Lacy

A fascinating presentation regarding 'GenZ', our younger people born between 1999 and 2015 and the 2nd largest generation alive today who have never known a world without the Internet. The number of younger Christians in the UK is at an all time low. Melanie talked of how to reach out to them; how we must understand what world they live in, their values, fears and culture. GenZ

are very much about the here & now, whereas Christians have a 'here & wait' approach to life and faith. We were asked to consider the following measures:

- ✓ To empower and equip the younger members of our church to share their faith with their peers
- ✓ Develop a whole church curriculum so that the family can relate to the same passage outside church
- ✓ Treat young Christian's seriously
- ✓ Include them in the whole of the service including Communion
- ✓ Pray and support the families with GenZ members

discipleship
vocation
evangelism

22nd October 2019 at St Mark's Church, Basford

An update on the Diocesan Direction of Travel with its new emphasis on Discipleship, Vocation, Evangelism and Education (DVEE), including the latest developments for Lay Ministry training by Dr Lindsey Hall

In order to support the diocesan mission statement [As we follow Christ in the footsteps of St Chad, we pray that the two million people in our diocese encounter a church that is confident in the gospel, knows and loves its communities, and is excited to find God already at work in the world. We pray for a church that reflects the richness and variety of those communities. We pray for a church that partners with others in seeking the common good, working for justice as a people of hope], Lindsey talked through the various courses, training and types of ministry to explore and some new developments to support this discernment.



29th January 2020 at St George's Church, Newcastle

Considering Mental Health Issues by Crossways Community, a Christian Mental Health Charity based in Tunbridge Wells

Mental health is much in the news at present. But many of us are still scared about it or do not know how best to respond. People with poor mental health can feel misunderstood or marginalised in church. The presentation focused on some of the issues (and a few of the misconceptions) around mental illness, how we can support those who struggle with poor mental health and how we can look after our own mental health. Recognition was also given to the impact of pressure for our clergy. We were also reminded of the strength from characters and passages in the Bible which show God's steadfast love and gentle care whatever our state of mind. We were encouraged to try and understand how to walk the Christian path alongside those who long to belong but whose minds may be troubled.

Linda Hough



Living Streams

Ezekiel 47:12 NIV

*Fruit trees of all kinds will grow on both banks of the river.
 Their leaves will not wither, nor will their fruit fail.
 Every month they will bear fruit,
 because the water from the sanctuary flows to them.
 Their fruit will serve for food and their leaves for healing.*

The aim of 'Living Streams' is to encourage and nurture Christian discipleship and to promote and facilitate Christian healing. 'Living Streams' services are held on the first Sunday evening of each month, except for the first Sunday in January.

'Praise' services are held at All Saints' Madeley. 'Praise with Prayer for Healing' services are held at St. Margaret's Betley and offer a quieter style of worship with opportunity for prayer for healing.

Through 2019 we followed the theme "New life in Christ" and saw continued growth in the number of people attending and maintained the representation of five churches in most services. The services, as before, were led by our own team of worship leaders with the support of some of our lay-leadership team who shared a leadership role in the services. On three occasions, we met at the earlier time of 6-00pm for refreshments, sometimes 'seasonal'! This was well-received, and we plan to repeat this occasionally in 2020.

In 2019 we sadly lost two long-standing supporters of our Living Streams services, Garth Hastings who died in March and Kenneth Laird who died in December. Garth was one of the founding members of "Living Streams" almost fifteen years ago, contributing to the leading of our services and attending almost all the events until his failing health prevented him doing so. Kenneth was a man of strong faith who enjoyed the fellowship of our services up to about two weeks before his death. Both men were always an inspiration and a source of great encouragement and are greatly missed but we thank God for them and quietly rejoice that they have received the reward of their faith.

This year, we have embarked on a series of "The one-liners of Jesus" - those short statements which can so easily be overlooked but which have great significance for the listeners of His day, and for us.

A warm invitation is again extended to all these services and events. Details are in the Parish Magazine and Church notice sheets. If you would like to receive information about our services and events, please send an email to livingstreams12@gmail.com and we will add you to our circulation list. (Your details will not be shared and communications are sent out 'Bcc'!)

Alan Bailey, March 2020

Let the word of Christ dwell in you richly... as you sing psalms, hymns and spiritual songs with gratitude in your hearts to God. Colossians 3.16

The Choir



A big thank you to all our choir members, who over the last 12 months have committed themselves to preparing and leading the singing, in all the different forms of worship we enjoy at St. Margaret's ! Quite apart from the huge variety of hymns and songs (about 180) they have contributed 45 different choir anthems over the year as well as special music for the special occasions.

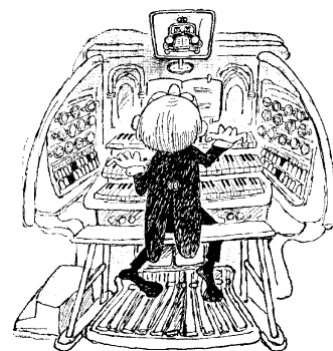
Well done, one and all !

Sadly we have lost a number of children recently from the choir, but still have 4 keen regulars attending Family Worship and welcome any young person who'd like to have a go ! There are 20 adults on the books, and it's great to see and hear them in full flow.

Participation in 'Come and Sing' events in the area is always encouraged, so it was good that a dozen or more members and other friends attended Bob Chilcott's singing workshop in Macclesfield last autumn.

Our Organist

There's been a tremendous commitment over the year from our organist, Alison Hendricken, and we thank her for her wonderful contribution to our worship, week in week out. Although restricted to the piano over Christmas and New Year with a broken leg, she carried on (wo)manfully and we are delighted to hear (and see) her back on the organ stool again.



Thanks too to our former organist Geraldine Luckhurst, who has so kindly deputised on a number of occasions during the year and to our great delight covered organ duties at the Carol Service when Alison was restricted to the piano.

We are grateful too to Scott Austin and Philip Crookall for covering the occasional Evensong for us.

Our Instruments

Our organ continues to serve us reliably, thanks to regular maintenance from Jim Molyneux. And our Roland electric piano is also in good working order.

Special Services

It was good to provide special music for the Thanksgiving Service in May and the St. Margaret's Celebration in July, but regrettably the choir was only required at one wedding in 2019. However a special highlight was the involvement of extra singers in a Christmas Choir of 45 people to sing at the Carol Service.

It was also a special privilege for a dozen choir members, supported by our organist, to sing at a short Carol Service at Doddlespool Hall.

Kevin Hamer(Choirmaster) February 2020

Celebrating

THE BELLRINGERS

We have 10 ringers who are all members of the North Staffs Association of Change Ringers. Whilst this seems a reasonable number for 6 bells, we sometimes struggle for ringers due to holidays and illness. Anyone interested in learning to ring will be made most welcome and introduced to a challenging but enjoyable pastime.

We are very grateful for the contribution Josie Martin has made to our ringing since moving to Madeley, Josie is an experienced ringer, but unfortunately there is no ringing at Madeley at the moment. Betley have provided the majority of the ringers for two weddings at Madeley also we helped them to ring for the All Saints patronal service.

The bell *ringing* dedications are continuing to be a huge success, we endeavour to ring well all the time but I think the added incentive has led to some excellent ringing.

Two flags have been purchased with a generous donation from the Betley Bonfire Community Awards, these are now being used. The renovation of the flagpole is now completed.

I wish to thank all our ringers for their enthusiasm and commitment throughout the year.

The normal maintenance of the bells is being carried out by the ringers.

Robert Bailey

2020

THE READING ROOM

Report to the Annual Church Meeting 2020

In September we will celebrate 20 years of the Reading Room in its present form and we are planning to mark the occasion with a special event.



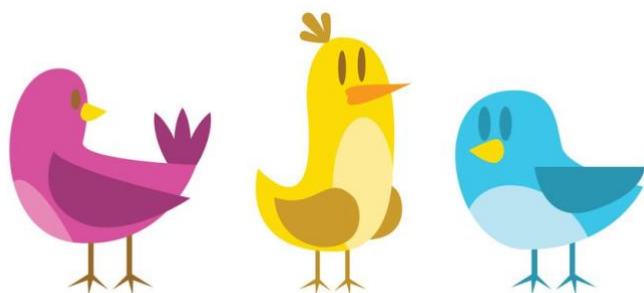
Our Bank Holiday walks are as popular as they've always been. This one was on New Year's Day.

The St. M's monthly lunches are very much enjoyed by people who live alone and the Reading Room provides a perfect venue.



Monthly Taster Talks have continued to be enjoyed throughout the year and we held a stall in November in aid of St. Luke's (Cheshire) Hospice. We are also a collecting point for the Newcastle Foodbank.

We will never know what a help the Reading Room has been to individual people but those who use it on a regular basis can't imagine life without it now. On a fairly regular basis we welcome visitors from further afield and they are always impressed by how friendly we are. As I write this we have had a lady in this morning who lives in the other Newcastle (dare I mention it!) who was staying locally with her daughter, and she is looking forward to coming again on her next visit! As always a big thank you to all our willing volunteers without whom we could not remain open as a meeting place. We thank God for the blessings we have received.



EARLYBIRDS REPORT

2019-2020



Earlybirds have been busy as ever!!
We have Earlybirds in

*Leaders are
Helen, Gill, Clare,
Elizabeth and
Emma.*

the vestry during most Communion services. We enjoy sharing stories, playing games and being creative.

We have learnt about the stories of -
Doubting Thomas, Jesus calming the storm, and the Good Samaritan, to name but a few.
We even headed out in the rain for an Autumn Walk.

Numbers of children vary - but we always have lots of fun!!

All Saints' Madeley and St Margaret's Betley –

Praise and Play 2020

"Praise and Play" celebrated its sixth birthday on January 26th 2020.

Praise and Play is a simple service for Mums and Tots (sometimes dads or grandmas). We run weekly during term time and this year we have welcomed over 75 families – *thankfully not all at once!*

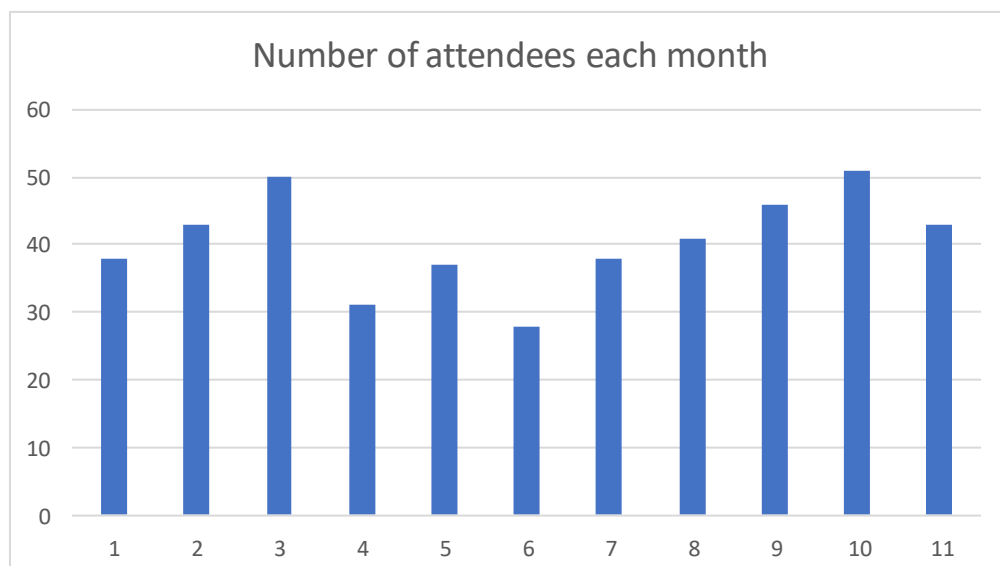
The sessions are full of fun and friendship: crafts, songs, drinks and biscuits and lots of chat. We praise and thank God together. There is a strong team of volunteers (jointly from St Margaret's and All Saints') who support the mums and love playing with the children. Drinks and biscuits are an important part of our gathering.

Praise and Play is more than a baby and toddler group – it an introduction to worship and a meeting place for friendship, prayer and support. For many of the mums who come, it is a weekly highlight – a chance to come out into a safe place to meet friends and for the children to socialise and join in with a simple service complete with a take-home craft.

Praise and Play is one of the best things we do through the week and a much appreciated outreach into our community – it is lovely to see the church full of life and fun. It is also an important part of our baptism support ministry – it is great to be able to invite young mums and dads to something that is focused on their needs and a very Godly ministry.

Over the academic year September 2018 to July 2019 Praise and Play have registered 48 families which equates to 115 persons, not including 12 helpers. As the children reach 3 years we sadly have to say 'Good-bye' so the number of attendees fluctuates over time.

The data has been analysed using information collected over 33 weeks.



We average 40 families each month and total attendance over the year has been 446. (This figure is per family and not individuals)

Praise and Play: a very special gathering for young parents and their children – a weekly highlight - sharing the love of God with young families

Peter Chantry - April 2020

YOUNG PEOPLE and FAMILIES **OTHER ACTIVITIES**

at All Saints, Madeley and St Margaret's, Betley
A.P.C.M. 2020

FAITH AND FAMILY

Faith and Family is an initiative, which began in Madeley earlier last year. It is open to both churches, but so far there has been no real uptake from Betley families. Members have met regularly to explore ways of worship and learning about our faith in a family context. It is a good group that supports and motivates us in our journey as parents who are keen to nourish faith in our children.

We're continuing to explore the possibility of a monthly or weekly evening service (maybe a Messy Church kind of event), by trying to ascertain if we have enough people on the team run it. We also need to consider times and venues.

John and the team would welcome suggestions and input from outside the group.

SUNDAY YOUTH GROUP

1) Madeley and Betley Youth Group (Reading Room, Betley, 2nd and 4th Sundays, 4.45pm): We have a core group of 8 young people who come pretty much every time, as well as some others who come occasionally. We continue to have fun and to explore topics of faith (recently, we looked at Lent, especially Shrove Tuesday and Ash Wednesday). The group is also interested in learning about other topics, which affect our lives. We had two speakers from the Magistrate Courts recently, which was very informative and interesting!

The group has gelled well. Our team of volunteers has increased and we met recently to plan the months running up to the Summer. We will be looking at difficult questions related to faith, such as the existence of God, how we can trust the Bible and suffering, as well as inviting other speakers to speak of their professional life. We will aim specifically to attract year 6 children at the end of the academic year.

(We have also had a request for confirmation which suggests this group may well be a first step for some young people.)

CHOCOLATE BROWNIES LUNCH CLUB (Madeley High School):

We have about 10 to 12 young people every week, enjoying games and a discussion using Alpha Youth videos. There are of course chocolate brownies to enjoy (even in Lent, just not for me!).

As the room where we meet is used by other students to have lunch, there are more pupils lingering on the background eavesdropping, which we greatly encourage.

This is a valuable opportunity for students to meet and explore `Christian Issues. We are always welcomed by a member of staff, please pray for other members of staff to be involved also.

John Beswick Pallister – edited by Jennifer Walton.

BETLEY SCHOOL

Betley School Report - 2019

The school has been a place of joy this year; new additions abound. Mrs Smith, and Mrs Graham have both returned from maternity leave, only for Mr Hewitt to go on paternity leave after the birth of his first child! The water has definitely got to be tested!

The school assemblies continue to take place weekly alternating between Rev Peter and Rev John.

Christmas 2019 also saw the continuation of the school putting on a Nativity play in church, decorating the Church Christmas tree with the children's handmade decorations, and putting together the Christingles.

Please continue to pray for the work of Betley Primary School as it plays an important role in the life of the Church and community.

Jim Cartlidge

Fellowship Groups 2019/20

***They devoted themselves to the apostles' teaching, and to the fellowship,
to the breaking of bread and to prayer. Acts 2.42***

Our three fellowship groups have continued to meet, usually, in the Reading Room on a twice a month basis. They all enjoy fellowship, food, worship and discussion on some aspect of the faith. They are self organising but under the general oversight of St. Margaret's Ministry Team. Total membership of these groups is 30 -35 people.

They are a great way for us all to deepen our understanding and faith, through sharing and mutual support..... and have some food and fun in the process.

Two of the groups support particular Christian charities, prayerfully and practically.

Searching Issues !

1st and 3rd Tuesdays from 10.00 – 12 00 in the Reading Room.

Enjoy homemade cake, biscuits and coffee.

Currently following ***The Prayer Course***

Co-ordinator - Mike Darlington

Puddings !

1st and 3rd Tuesday evenings at 19.30 in the Reading Room

Enjoy something sweet and yummy every week.

Currently following ***The Prayer Course***

Chosen Mission Link – Christian Solidarity Worldwide

Co-ordinators – Revd. Peter Chantry and Jennifer Walton

Just Desserts !

1st and 3rd Wednesday evenings at 19.30 in the Reading Room

Enjoy cheese, biscuits and fruit.

Currently following ***The Prayer Course***

Chosen Mission Link – Sanctus, St. Mark's Shelton

Co-ordinator – Kevin Hamer

There is a warm welcome for anyone interested in joining one of these groups; or even just to have a 'taste' ! Contact the relevant co-ordinator.

Joint Events

Many group members attended a delightful summer evening gathering at the Willescroft's house for worship and fellowship and also enjoyed an Advent party in the Reading Room, which included watching two substantial excerpts from the BBC Production 'The Nativity'.

Publicity

The existence and activities of the three Groups are kept in the 'public eye' through references on the weekly pew sheet and the monthly Parish Magazine.

Kevin Hamer February 2020

Betley Parish Magazine 2019

The aim of the magazine continues to be twofold; to provide a medium for sharing information through the village, both Christian and secular, but also as a tool for outreach. Some magazine content also gets published on the Church's Facebook page in order to reach a wider audience. All the profits of the magazine continue to go towards the maintenance of St Margaret's graveyards.

Our print run is still in the order of 440 copies, most of which are hand delivered with some going out by post. A few are placed in the Reading Room and Church for casual sales, with others placed in areas where there is a "captive audience" for outreach purposes – such as the Wrinehill swimming pool.

The number of adverts increased last year, providing additional income. As usual, at the end of the year we had a turnover of advertisers, but have managed to fill all available spaces, still having one advertiser on the waiting list.

Last year also saw the addition of two new editors, Sadie and Ken Blankley, who joined the team before Christmas.

Many thanks as always to Kevin Hamer, Sue Cheetham and her delivery team and the Print Room at Keele.

Jim & Andrea Cartlidge

St. Margaret's Website
www.saintmargarets.co.uk

St Margaret's communications have seen quite a change over the last 12 months, with Jim moving onto new pastures the new crew are getting to grips with the various platforms that the church uses to communicate with the church members and the outside world. The website is no exception with a new webmaster taking the reins late last year.

The aim is to refresh the website, to try and keep the content up-to-date and relevant to the website visitors where ever they may be in the world.

One area of the website that it is hoped to renew and expand is the Memorial Window pages. The 2018 History Project carried out by the Betley Local History Society unearthed a great deal of information about the role of inhabitants of the parish in both world wars and its seems fitting to tell the world their stories.

Another area that we would like to expand is our church in pictures. We would like far more pictures of St Margaret's through the seasons, highlight the beauty of the flowers in the church, the artwork of the children. It would even be great to use multimedia and hear our choir and music.

There is plenty to do and a very steep learning curve for the webmaster so keep on looking at the website and watch how it evolves.

Graham Holton

Facebook report 2019/20

As Christians seeking to be witnesses and grow disciples, we must be wherever people congregate.... This includes the world of social media which gives us a great opportunity to reach out to people.

St Margaret's has had a Facebook page for a few years, the main purpose which is to provide information about the services we offer, increase awareness of how we share Christ's love in the Betley community, and to share news about our people and special events.

Regular activity includes posting the pew sheets every weekend (kindly produced by Audrey).

There are additional posts for special services such as the Harvest Festival, commemorative service, all our Easter and Christmas events, inviting people to attend, bring friends, or share posts to extend our reach. Our followers: These are people who are following our page so our posts automatically appear on their news feeds without them having to search for us on Facebook.

The number of followers of our page is currently 128 (there were 87 at the beginning of 2019) so it is encouraging that there is an increased interest in what we're sharing with people.

The majority of our followers are from the UK, around half of them are in our surrounding area, but there are a few people from as far away as Australia!

Active engagement from our followers is not particularly the main objective of our online presence; our mission is to reach out to people and let God do the rest! However, it is interesting for tactical purposes to consider what grabs people's attention. Posts with the most engagements include photos of what we have been doing in church ...

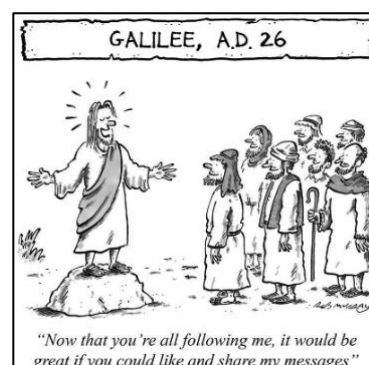


The posts that had the most remarkable reactions were those celebrating John's ordination and Jean's licensing – it was thrilling to see how delighted our followers were for these fantastic people in our church.

Going forward, our social media team

(jointly with All Saints, Madeley) is dreaming up ideas for developing a strategy to use our social media presence more effectively. Just a few of the areas for us to think about are:

- Who our audience is – not just church members but the wider community. We have many followers who don't attend church but live locally so how can we serve them better?
- Advertising more regularly our community outreach posts – praise n play, reading room lunches, foodbank, fund raisers etc
- Posting snippets from our Sunday services and other events (such as the Old Testament day) including pictures. We must be mindful of safeguarding issues surrounding the use of photographs with faces on, particularly with children. Consent forms must be readily available at such events where photographs could be shared widely.
- Posting a weekly prayer and prayers for relevant current affairs affecting our community. Rev Peter is to give this some thought as to sustainability.
- A new banner picture for the page – perhaps a photo of the church with lots of people in front of it.



of





St.Margaret's organises support for the Newcastle Foodbank from the whole community, whose contributions each week continue at a high level.

**During 2019, the community gave 1,347 kgs of food !
That's equivalent to about 3,000 meals !**

Warehouse Manager Peter says,

"The generosity of the people of Betley really is a major factor in enabling Newcastle Staffs FB to continue to feed people in need."

Collection boxes for non-perishable food exist in the Reading Room and at Church, just inside the church door. This year we have also encouraged contributions of washing up liquid/gel and washing powder.

Every week Betley's contributions are taken to the Foodbank warehouse on Parkhouse Industrial Estate; we are very grateful to Gill Seymour and Ken Eaton in helping with this.

The Newcastle-Staffs Foodbank exists to help local people in crisis. Local professional people such as doctors, health visitors, social workers, Citizens Advice Bureau staff, welfare officers, the police and probation officers, identify people in need and issue them with vouchers to enable them to obtain emergency food for them and their family for up to 3 days.

At six distribution centres around the Borough volunteers meet clients over a cup of tea and are able to signpost them to agencies who can help resolve any longer-term problems they may have.

People continue to struggle with benefit payment delays, low wages and insecure work and Newcastle Foodbank is expecting demand for its services to continue through 2020. We shall continue to provide regular updates in the Parish Magazine and on the Reading Room and Church noticeboards.

The Newcastle Foodbank is seeded by the Trussell Trust but works independently through the Borough of Newcastle.

www.newcastlestaffs.foodbank.org.uk



St. Margaret's PCC Summary of Charitable Giving

Financial Year Ended 31 December 2019

(It was the policy of the PCC to focus its charitable giving for 2019 on 4 pre-determined Christian or other charitable causes in the UK and abroad, in addition to meeting its commitments to the Lichfield Diocese).

(Amounts rounded to the nearest £)

	2018	2019
Voluntary Income	£	£
Planned Giving	39,157	37,157
Tax Recovered	8,957	10,162
Other Collections and Giving	<u>6,960</u>	<u>7,128</u>
TOTAL	<u>55,074</u>	<u>54,447</u>

Payments Made

Lichfield Diocese Mutual Support Fund (Element of Parish Share above allocated costs of ministry)	9,733	10,114
---	-------	---------------

Grants – Relief/Development

Christian Aid	524	627
---------------	-----	------------

Grants – Home

Children's Society	599	787
Sanctus St Mark's	-	1,157
Bishop's Ord. Candidates' Fund		190
Bishop's Lent Appeal		20
North Staffs Bell-ringers		50

Grants – Secular

St. Luke's Hospice	544	
Newcastle Foodbank	288	
Approach		500

TOTAL	<u>11,688</u>	<u>13,445</u>
--------------	----------------------	----------------------

Giving % of Voluntary Income	(21.2%)	(24.7%)
% excluding additional Parish Share	(3.5%)	(6.1%)

Sharing

ST. MARGARET'S LUNCHESES

In May this year St. Margaret's Lunches will have been taking place for 4 years! These happy, relaxed gatherings have continued monthly in the Reading Room, where those living alone in the village are able to share a meal together and enjoy some company in a comfortable and friendly environment.

We currently have 40 names on our list and are able to offer invitations to around 12 people each month.

In the past year Revs. Peter, Pamela or John have been present on every occasion, but one, to welcome guests and join in the meal time. We know from comments received that this monthly event is very much appreciated by those who attend. For our church we are delighted that this outreach project has very much become part of Betley village life.

We are extremely grateful to our teams of cooks and helpers who continue to provide beautiful food and a cheerful presence to take make each month a special occasion for our guests.

Extra names to add to our list of cooks and helpers will always be appreciated!

St. Margaret's Lunch Team February 2020

Marriage Support

Report to APCM 2020

(All Saints' Madeley and St Margaret's Betley)

2020 currently has 7 weddings booked in – (4 at St Margaret's and 3 at All Saints'). It is a great privilege to welcome, meet with and support couples preparing for marriage.

On Sunday 5th April, we are expecting the couples for our annual Marriage Sunday Lunch and Workshop. The session is entitled: *Bins, Bogs and Brilliant in-laws* and is designed to help couples take a light-hearted yet serious look at the things that make a marriage strong and resilient and above all else loving.

This year the workshop will be led by John Beswick Pallister and myself. Couples who've come in previous years have been very quick to express their gratitude and appreciation for how the session has impacted on them.

"We have found ourselves going over the stuff we did in the workshop and learning new things about each other. Thanks for a great session."

Please remember these couples as they make their commitment to each other that God would strengthen and encourage them in the journey ahead with a strong sense of His goodness and blessing.

Peter Chantry

Alpha 2020

Report to APCM

(All Saints' Madeley and St Margaret's Betley)

Our annual Alpha Course continues to be a **great inspiration** to many in our parishes. It represents so much more than just a series of **12 weekly meetings**.

It is a **wonderful gathering of those who are exploring the Christian faith** for themselves (sometimes for the first time), those who are sharing their own testimony and faith journey by doing a talk and those who are offering scrumptious hospitality. All supported by the prayers of many church members who are keenly praying for the group members as they make their inquiry.

This year we have a group of 9 participants and several new speakers. It is noticeable that this year's speakers include 4 former participants whose faith has grown in confidence and enabled them to share their experience and something of their Christian journey.

Alpha is of course both a national and an international phenomena and **anyone can access the talks** on line:

https://www.youtube.com/results?search_query=alpha+course but there is **no substitute for being part of a group** who will support and encourage each participant in their thinking and exploring the importance of Christian faith in the modern world.

The group are greatly looking forward to a service of **Confirmation on Sunday 10th May** when +Michael of Lichfield will be our confirming bishop. Some of the group who have been previously confirmed plan to renew their baptismal vows as a mark of their Alpha experience and they desire to journey on with Christ.

Thanks to EVERYONE who came, prayed, cooked, spoke and took interest in this year's course. ***How about YOU next year?***

Peter Chantry and John Beswick Pallister

Dementia Friendly Church Annual Report

The Diocese of Lichfield Dementia Friendly Emblem is now in place on the noticeboard outside, so that newcomers can see that we are an inclusive and dementia friendly church prior to entering the building.

The noticeboard inside church has been updated on a monthly basis throughout the year with something relevant and current regarding support for people living with dementia and their loved ones.

The next Dementia Friends Training Session is currently being arranged and will be held at All Saints Church, Madeley (but is for Betley congregation too). St Margaret's needs more Dementia Friends, and currently has only twelve.

The toilet in church is not very dementia friendly, and over the next few months some minor changes will be carried out.

I am open to any suggestions, nothing has been proposed at time of report

Dementia and incontinence:

An emergency pack will be placed with the other toiletries for anyone who needs a "quick change".

Dementia Friendly Signage is still ongoing and will hopefully be completed in the near future

Jenni Nixon - February 3rd

STRUCTURE, GOVERNANCE AND MANAGEMENT

The Parochial Church council (PCC) is a corporate body established by the Church of England.

The PCC operates under the Parochial Church Council Powers Measure and is a charity exempt from registration with the Charity Commission,

The method of appointment of PCC members is set out in the Church Representation Rules.

At St Margaret's the membership of the PCC consists of the incumbent (our vicar), churchwardens, a readers' representative and members elected to the Deanery Synod and the PCC by those members of the congregation who are on the Electoral Roll.

All church attendees are encouraged to register on the Electoral Roll and stand for election to the PCC

All PCC members are elected to stand for one year. Deanery Synod representatives are elected for a period of three years and are members of the PCC on election.

There are three formally constituted groups responsible to the PCC

- **The Standing Committee**, which is empowered to take specifically delegated or urgent decisions on behalf of the PCC.
- **The Ministry Team**, who share responsibility with the incumbent for the spiritual development and mission of the Parish.
- **The Reading Room Committee**. Through a deed (the 'Trust Deed') made between Lichfield Diocesan Trust ('the Trust') and St Margaret's PCC, the Trust 'stands possessed of the Reading Room property' on behalf of the PCC which is the Administrative Trustee. In its capacity as Administrative Trustee, the PCC has appointed a Reading Room Committee to manage the Reading Room in accordance with its aims as defined in the Trust Deed.

ADMINISTRATIVE INFORMATION

St Margaret's Church is situated in Church Lane, Betley, Crewe, CW3 9AX. It is part of the Diocese of Lichfield within the Church of England.

The Parish is held in plurality with All Saints', Madeley, with one incumbent, the Revd Peter Chantry, BSc, BA (Hons.)

Correspondence should be addressed to the PCC Secretary, St Margaret's Church, Church Lane, Betley, Crewe, CW3 9AX.

PCC MEMBERS

who have served at any time from the 29th April 2019 until the date this report was approved are:

EX OFFICIO MEMBERS;

Incumbent	Revd Peter Chantry (Chairman)
Curate	Revd John Beswick Pallister
Reader and Warden	Jennifer Walton
Reader and Warden	Kevin Hamer

DEANERY SYNOD REPRESENTATIVES:

Helen Shorrock
Linda Hough
Rick Hough

ELECTED MEMBERS:

Audrey Darlington
Jane Hamer
Gill Mellor
Graham Nixon
Graham Holton
Mike Smith (Treasurer)
Bernard Swift (Church Clerk)
Peter Ainsworth (Fabric Officer)

The following have served as **DUTY WARDENS** to support the Wardens in Church

Jean Ainsworth
Terry Goldstraw
Helen Shorrock
Bernard Swift
Ann Deavall
Nick Deavall