



Aug  
2020

# Betley



## PARISH NEWS

All profits go towards the maintenance of the churchyard. **60p**

**Officers of the Parish Church of St Margaret's, Betley ....****VICAR OF BETLEY AND OF MADELEY**

Vacancy

The Vicarage, Vicarage Lane, Madeley, CW3 9PQ

01782 750205

**ASSISTANT PRIEST**

Revd. Pamela Lane,

Brandon, Main Road, Betley, CW3 9BH

01270 820258

**ORDAINED LOCAL MINISTER**

Revd. Alan Bailey

01270 820043

**CURATE**

Revd. John Beswick Pallister (johnbpallister@gmail.com)

07428 342801

**CHURCH WARDENS**

Mrs. Jennifer Walton

6 Court Walk, Betley, CW3 9DP

01270 820051

Mr. Kevin Hamer,

Shade House, Main Road. Betley, CW3 9AA

01270 820704

**READERS**

Mr. Kevin Hamer,

Mrs. Jennifer Walton

Mrs. Jean Ainsworth

01270 820704

01270 820051

01270 820532

**READER EMERITUS**

Mr. Michael Darlington

01270 820582

**CHOIRMASTER**

Mr. Kevin Hamer

01270 820704

**ORGANIST**

Mrs Alison Hendricken (alisonhendricken@sky.com)

01270 820078

**CAPTAIN OF THE BELFRY**

Mr. Robert Bailey

01270 820522

**CHURCH CLERK**

Mr. Bernard Swift

01270 821760

**PCC TREASURER & PCC CORRESPONDENCE SECRETARY**

Mr. Michael Smith (mike.rsmith@btinternet.com)

3, Balterley Court, Balterley, CW2 5SB

01270 821099

**SAFEGUARDING COORDINATOR**

Mrs. Jennifer Walton

01270 820051

**MAGAZINE DISTRIBUTION QUERIES**

Mrs. Sue Cheetham

01270 820463

**MAGAZINE EDITORS**

Sadie &amp; Ken Blankley

01270 829128

Please email all entries/articles by the 15<sup>th</sup> of the preceding month to **BetleyParishMag@gmail.com**



## CHURCHWARDEN'S MESSAGE

Dear friends,

"The times – they are a-changing!"  
sang Bob Dylan.

Sadly Rev. Peter, our vicar, left us for pastures new last month. We shall miss him; through him we have learnt and grown so much in our faith, as he has lived the Christian life amongst us these last seven years. The end of another chapter in the life of God's Church here.

But the good news is that work is underway to find a new vicar, and local people are working hard on how the vacancy will be presented to attract likely candidates. We pray that God's Holy Spirit will work through this process.

*God leads us on!*

I wonder how many changes our 13<sup>th</sup> century church building has witnessed? No doubt they include a number of health epidemics not to mention countless vicars. And five months without public worship? That's nothing in the life of St. Margaret's - and that is about to end. In August there will be two opportunities for us to celebrate Holy Communion together in St. Margaret's once again – all safely organised. And every Tuesday at 09.15 Morning Prayers will resume in the church. Full details on page 4. These services will be in addition to our weekly Zoom service at 10.30 every Sunday. In September we hope to resume our main service in church at 09.30, but more about that next month.

*God leads us on!*

Time takes its toll on ancient buildings like St. Margaret's; we have needed substantial repairs to the east gable of the chancel, not least the renewal of the wooden cross at the apex. Thanks to excellent work by our contractor, Denmor Building, that work has been successfully completed (see p21). The lighting and wiring system inside the church has become increasingly problematic in recent years for both safety and fire risk reasons. A scheme for new energy-efficient lighting and rewiring has been approved by all the authorities and we hope for installation in September.

*God leads us on!*

And what about us? Aren't we also experiencing great change and renewal in our lives? Just as God our creator and sustainer has guided the church in Betley to renew itself over the centuries, so He will refresh us too. He can and will start a new chapter in our lives – no matter how old we are!

So whether it's a new vicar, new ways of worshipping, renewal of the church building, or the new you, God will be at the heart of it, if we let Him.

*He leads us on!*

"Lo, I am with you always, even to the end of time." said Jesus

See you soon – in Church!

*Kevin Hamer*  
(Churchwarden)

**St Margaret's Church:**  
***Celebrating, sharing and growing in God's love***

## **NEWS FROM THE VILLAGE...**

Welcome to a special August edition of Betley Parish News - we wanted to give local organisations the chance to update their news this month as the national lockdown begins to ease. So we have new information about Betley Cricket, Bowling, BATS, and the Village Hall.

This edition is online once again but we plan to be back in print for September as the KeeleSU printshop is returning to operation, at least part-time. As before, if you can, please help out friends and neighbours who rely on the print edition to see this August edition, and do keep on supporting our local businesses whose advertisements start on p23.

We're missing the Betley Show this month, but the village scarecrows are popping up again with ingenious and creative responses to the 'key worker' theme. Judging is underway as we go to press.

And finally, don't miss the advance notice of a 20th anniversary Reading Room walk on 5 September, details on page 18.

*The Editors*

### **St. Margaret's Church re-opens for worship**

In August the following services will be held in Church and all are welcome.  
*(2 metre social distancing and other safety measures will be in place and face coverings are recommended)*

<b>09.15 Tuesdays 11<sup>th</sup>, 18<sup>th</sup>, 25<sup>th</sup> August and 1<sup>st</sup> September</b>	<b>Morning Prayers</b>
<b>18.30 Sunday 9<sup>th</sup> August</b>	<b>Said Evensong (BCP), with organ</b>
<b>18.30 Sunday 23<sup>rd</sup> August</b>	<b>Holy Communion, with organ</b>
<b>09.15 Tuesdays 4<sup>th</sup> August</b>	<b>Holy Communion (BCP)</b>

***We are also welcome at Holy Communion in All Saints', Madeley every Thursday at 10.00***

St. Margaret's continues to be open for **individual private prayer** between 09.00 and 17.00 daily. You are welcome to enter but please adhere to the guidelines posted on the Church door. Frequent cleaning and disinfecting of areas used is taking place. Hand sanitiser is available, but feel free to bring your own!

*Jennifer Walton and Kevin Hamer*  
 Churchwardens



## ST MARGARET'S BETLEY... SERVICES IN AUGUST

During August our main Sunday worship will be streamed live via Zoom at 10.30 each Sunday. There will also be a live streaming of our more informal *Living Streams* service at 6.30 pm on 2<sup>nd</sup> August and 6<sup>th</sup> September. Details are issued each week by e-mail with advice on how to participate. Just let one of us know your e-mail address and we will include you. Please join us.

Rev. John Beswick Pallister (Curate): [longobedience@gmail.com](mailto:longobedience@gmail.com)

07428 342801

Jennifer Walton (Churchwarden): [jenwalto@aol.com](mailto:jenwalto@aol.com)

01270 820051

Kevin Hamer (Churchwarden): [kevinhamer53@btinternet.com](mailto:kevinhamer53@btinternet.com)

01270 820704

During August our services and key bible readings will be:

2 <sup>nd</sup> August	8 <sup>th</sup> Sunday after Trinity Service of the Word	From Nehemiah 2 and 4 <i>Return from Exile</i>
9 <sup>th</sup> August	9 <sup>th</sup> Sunday after Trinity with Holy Communion	Matthew 14. 22-33
16 <sup>th</sup> August	10 <sup>th</sup> Sunday after Trinity Service of the Word	Matthew 15. 10-28
23 <sup>rd</sup> August	11 <sup>th</sup> Sunday after Trinity with Holy Communion	Matthew 16. 13-20
30 <sup>th</sup> August	12 <sup>th</sup> Sunday after Trinity Service of the Word	Matthew 16. 21-28

*"The Lord is our refuge and strength,  
an ever-present help in times of trouble"*

***Thought for the day ... as delivered on Facebook by our clergy is taking a break during August.***

## CHURCH for CHILDREN and YOUNG PEOPLE

Praise and Play, Kids Church and the Madeley and Betley Youth Group are all on a holiday break but will be returning in September.

---

## **BETLEY, BALTERLEY & WRINEHILL PARISH COUNCIL**

### **Coronavirus and Community Support Helpline**

The Parish Council's Community Support Helpline (CSH) has provided an invaluable service to the community, particularly in the early stages of the pandemic. In consultation with Dr Patel it has become clear that the delivery of medicines no longer requires Parish Council involvement, and that facility will now cease. However, arrangements for the delivery of medicines can still be made if medical advice requires this service. Enquiries should be made to the surgery on 01270 820527, for a referral from Dr Patel. We are very grateful for the hard work of those involved in the delivery scheme.

As Chairman of the Parish Council, Robert Bettley-Smith would like to thank Dr Patel, and his team, for all their efforts in recent months. In keeping the medical service running for our community they have done exceptionally well. The Chairman would also like to thank Paul and Caroline Beardsmore at the village shop for their work in maintaining a safe supply of food and household goods. We are fortunate that they took over the shop, rose to the occasion and then surpassed it. Hopefully the community will now continue their increased use of, and support for, the village shop.

### **Speeding traffic**

Many activities have been disrupted owing to Covid-19 and lockdown, sadly speeding motorists has not been one of them! We are pleased to say that Staffordshire Police have now given permission for Community Speedwatch (CSW) volunteer groups to resume their work and the Betley CSW Group has already been out for two sessions. Covid-19 precautions limit us to just three suitable sites in the village but notable success was seen with the second session, where details of a large number of speeders were passed to the police. Additional volunteers who may wish to offer their time to this worthwhile endeavour are welcome. Please contact Cllr Neil Bullock on 07717 617454 or on [bullock.neil@btinternet.com](mailto:bullock.neil@btinternet.com)

### **Next Parish Council meeting**

It has now also been possible to restart Council meetings, albeit 'virtually' using an internet platform. The next scheduled meeting will be on Thursday 24<sup>th</sup> September. For details of how to view the meeting please contact the Clerk or check the details on the parish noticeboards or our [website](#).

*Gwyn Griffiths*

Clerk

[griffiths725@btinternet.com](mailto:griffiths725@btinternet.com)

01270 663832



## The Village Hall

The Village Hall, Play Area and the sports clubs closed down at the beginning of the lockdown when advised to by the Government.

Use of the tennis and bowls facilities has now restarted in line with Government and the relevant sports' governing bodies' guidelines in May/June. (See details later in the magazine about these two activities).

After rigorous checks, a comprehensive risk assessment and the introduction of signage, the Play Area was able to reopen on 9<sup>th</sup> July in line with government guidelines.

The Hall has now been completely risk assessed and the aim is to be fully opened by the **start of September**. Currently, on re-opening, we will be limited to a maximum of 30 people in the Hall at any one time so the return to normal usage will, of necessity, be gradual. The Hall is in the process of buying a disinfectant fogger to ensure that the Hall can be thoroughly cleaned between users.

May we take this opportunity to thank our regular users for their patience and understanding since we were placed in lockdown.

*Richard Head*

---

## Betley village shop and Post Office

From 24 July all customers in our village shop are required by Government guidelines to wear a face covering. The rationale behind such coverings is to protect other people; many people with Covid-19 do not show any symptoms. For popping into the shop a closely woven scarf or similar will do – it doesn't have to be a mask.

Caroline and Paul have worked so hard to support the village, it's only fair that we should abide by the guidelines and not put them in the awkward position of having to ask us to do so.

The village shop telephone number is 01270 820544 and they are able to arrange home deliveries for those who still need to self-isolate.

*The Editors*

---

## BOROUGH COUNCILLORS

Cllr Simon White  
[Simon.white@newcastle-staffs.gov.uk](mailto:Simon.white@newcastle-staffs.gov.uk)  
Tel 07561 340 899

Cllr Gary White  
[Gary.white@newcastle-staffs.gov.uk](mailto:Gary.white@newcastle-staffs.gov.uk)  
Tel 07834 090 747

---



## ***Well done Betley! 111kg donated in July***

In August any non-perishable food is welcomed but current shortages are;

Small sugar, tinned fruit, rice pudding and custard. Shampoo and shower gel is also needed.

Collection boxes in the porches  
of the Reading Room and the Church are frequently monitored.

Your contributions are being secured  
and safely transferred to the warehouse.

More information is available from

[www.newcastlestaffs.foodbank.org.uk](http://www.newcastlestaffs.foodbank.org.uk)

*Kevin Hamer 820704*



## **BETLEY READING ZOOM**

**Missing The Reading Room? Why not Zoom in  
on Monday, Thursday or Saturday  
between 11.00 and 11.40am for a chat  
(bring your own coffee) Contact Kevin for the link  
[kevinhamer53@btinternet.com](mailto:kevinhamer53@btinternet.com)**

**Look out for our  
VJ Day 75th Anniversary  
window display on 15th August**





## It happened on this day

August 15<sup>th</sup> is VJ Day (Victory in Japan) which marks the end of World War II for all forces and was 75 years ago this year. But other things in history happened on that date. Do you know what they were?

1. This man was born in Corsica on this date in 1769 and went on to be ranked as one of the greatest military leaders of all time. Who was he?
2. Also born this day but in 1964, she is one half of a philanthropic couple who have donated many hundreds of millions to causes to ensure "more children and young people thrive and survive". Who is she?
3. In 1914 this artificial waterway was opened to traffic. What is it?
4. By coincidence, the capital city of the country in which this waterway was built was founded on this day in 1519. What is the name of the city?
5. In 1969, 400,000 young people attended a rock music festival on a dairy farm. What was the festival called?
6. In 1939 this musical had its premiere in at Graumans Chinese theatre in Los Angeles California. What was it?
7. In 1947 two countries, formally part of the British Empire, were given independence. Which were the two countries?
8. In 1952 flash floods caused the deaths of 34 people in an English town. Which town?
9. In 2015 a country created its own new time-zone by moving the clocks back half an hour. Which country?
10. Which British Royal has a birthday on this day?

*Answers on page 18*

### DO YOU NEED PRAYER?



Would you, or someone you know, appreciate a private conversation with clergy and the chance for some personal prayer for yourself or someone you know?

Clergy from St Margaret's and All Saints' churches will be available by phone after the online Sunday services.

Please phone or send a message to the Curate, Rev John, to find out who is on duty on a particular Sunday.

## BETLEY PRIMARY SCHOOL

### Home Learning

Our children and families have done fantastically well since the lockdown started on their home learning. They have created models, sculptures, upcycled objects, written stories, completed maths challenges. The list is endless and the commitment shown has been fabulous.



Artsmark  
Silver Award  
Awarded by Arts  
Council England

We are delighted to announce that thanks to the hard work of Miss Stafford, our school has received the **Artsmark Silver Award**. This is fabulous news. Here's what the assessor had to say:

*"Betley Primary School have clearly developed a strong, rich series of arts activities and arts subject pedagogy that are enhancing the learning experiences of children. Music has been a strong point, with the headteacher taking a lead in music making and performance opportunities. This is excellent not only for the intrinsic benefits such experiences will bring, but also because it is inspiring and meaningful when senior staff actively champion the value of the Arts in this way. The scale of provision is growing in the school and you spent a lot of time mapping and planning progression within arts subjects which will later be a segue into a wider review of how the Arts might make a contribution in all subject areas. You have opened up chances for children to perform through African Drumming, performances for Christmas and at the Summer Fayre. It would be great to hear about some of the impacts these chances to perform may be having on learners, and ways you might capitalise on such positive experiences by tying them back to more day-to-day learning. Pupil voice and the ways in which the Arts can offer children a sense of agency and personal expression within their own learning journeys is something Artsmark is interested in promoting. It was great to see you beginning to work in this vein with the Arts Award provision in Year 3/4. "*

Artsmark assessor

### Rev Peter Chantry

Our children have contributed to a video of their memories of Rev Peter. Everyone at Betley CE Primary School wishes him the very best in his new Parish. You can watch it here:

<https://betley-ce-primary-school.primarysite.media/media/goodbye-to-peter-chantry>



### Challenges of the week

Our children have been taking part in weekly challenges of drawing Rob Biddulph's characters. Every week he posts at least one character and this has been great fun to follow and draw. Even the teachers were having a go! Have a look at some of the designs we have completed over the last few weeks. If you'd like to have a go his YouTube channel is below:

<https://www.youtube.com/c/RobBiddulph72>



### Nursery admissions

We have a few spaces left in our fabulous Nursery Class. To find out information please see the link below. Please note that all applications for Nursery go through school not the Local Authority.

<http://www.betley.staffs.sch.uk/admissions/> If you would like to come and visit when we return to school please contact the school office for an appointment: 01270 820286. In the meantime, if you would like to book a place for your child to start in Nursery in September 2020 please email me on [headteacher@st-lukes-silverdale.staffs.sch.uk](mailto:headteacher@st-lukes-silverdale.staffs.sch.uk)

### Keeping in touch over the Summer

Our teachers have created little videos for their new classes. There will be updates over the Summer holidays too. We are very much looking forward to having all children back in September.

<https://betley-ce-primary-school.primarysite.media/playlist/summer-activities-and-meet-the-teacher-videos>

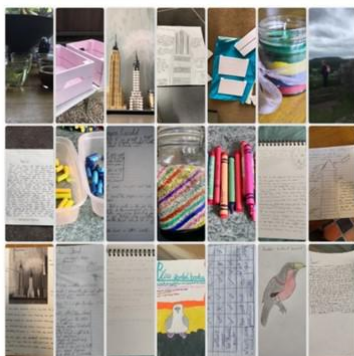
### Wishing you all a wonderful Summer

We would like to wish all of our families and friends a happy and safe Summer. We would like to wish all the Year 6 children the very best of luck in their new High Schools. Believe in yourselves and you will all achieve great things.

Photo gallery on the next page!

*Sam Ray*  
Headteacher

Some brilliant examples of what the children have been learning at home



Our amazing Year 6 children  
enjoying a water fight on their  
last day!





## ***ANYTHING GOES – The Musical is POSTPONED***

To our BATS supporters and colleagues:

Sadly, just two weeks before curtain up, the lockdown stopped us from putting on our sparkling and light-hearted musical, “Anything Goes”. It was a huge shock for everyone in the cast and crew and became one of the many issues that we have all had to reorganise in our lives over the last four months.

We were forced us to go into storage with our production, hoping to perform it as soon as we could safely, and it was therefore provisionally re-booked for the end of October 2020.

You will have heard news of theatre closures nationally and how the Arts and Entertainment sector is struggling. Thankfully, the government has now made a huge grant available to the industry to keep it going. All BATS members love live theatre and applaud this move, and of course Betley has not escaped unscathed. Regretfully, in light of the current circumstances nationally and how this affects us all locally, the production team and committee have decided that for everyone’s safety and peace of mind, we will not be able to perform in October or on stage at all this year. We are therefore looking to next year and to re-book this performance in March 2021. For the cast, it may require rehearsals starting in January again as we polish up our moves, songs and lines. On a positive note, there will be opportunities for additional cast and crew members to join and take part in this production. We’d love it if you wanted to come on-board.

This year is the 50th Birthday of BATS, a milestone that so many in the village and surrounding area have contributed towards over those years. Naturally this celebration, to include all our past and present members and planned for July, has also been postponed, but we will find the right time to party and meet with everyone again.

Thank you for your continued support everyone,  
Keep safe and healthy  
Kind regards



*Dena Swift*  
Chairperson



## ***A parting gift to Rev Peter from St. Margaret's Church ...***

At Rev Peter Chantry's last service for the parish the congregation presented him with a farewell gift, a cartoon especially created for the occasion.





## **... and what happens next?**

The task of finding a new vicar for the two parishes of Betley and Madeley follows a prescribed process determined by the Church of England and managed by the Diocese of Lichfield. A joint group set up by the PCCs of both churches is currently preparing a description of the parishes which the Diocese will use in its recruitment process. Representatives from each parish will be involved in the interviews. Overall it will be several months before a new vicar is welcomed and licensed to work in our churches.

All these activities are approached thoughtfully and prayerfully, and to that end the following prayer will be used in St. Margaret's and All Saints' in the coming months.

### **Prayer for the parishes**

*God our Father, you have welcomed each one of us in Jesus and called us to be his body in our communities. At this time of change fill us with vision, energy, and faithfulness in prayer that we may be true to this calling.*

*We pray that your Holy Spirit will stimulate interest in appropriate candidates to lead the ministry of your Church in Madeley and Betley, and that in your heavenly wisdom you will guide all those involved in presenting the vacancy and in choosing a new incumbent.*

*We pray that our new vicar may be a wise and gentle shepherd of your people, ready to serve our two parishes with joy, build us up in faith, and lead us by example in loving obedience to your Son, our Saviour, Jesus Christ.*

*Amen*

## **ST MARGARET'S CHURCH - HOW TO ARRANGE...**

**Baptisms** - Please contact the Parish Office 01782 750205.

**Confirmations** - Adults and young people who would like to re-commit themselves to the baptismal promises made on their behalf and who would like to prepare to begin to receive communion are encouraged to speak to one of the clergy about being confirmed.

**Weddings** - Normally, weddings can be arranged for couples when one or both partners live in the parish or are on the electoral roll of our church. Please contact the Parish Office 01782 750205.

**Funerals** - Arrangements for funeral services in church are made through the funeral director who will contact the clergy.

**Visiting** - Please let the clergy know of anyone who is ill at home or in hospital, and who would appreciate a call.



## BETLEY CRICKET CLUB

Finally, the cricket season is underway with 11 Saturday games through July, August and September.

Betley are competing in Division 7 and started our campaign with a convincing win away at Oakamoor.

As well as the Saturday fixtures, we are looking forward to midweek matches and Sunday games.

One of the highlights will be three ladies' matches, the first being 30 July starting at 6:30pm and the other two early in September.

We are also recommencing junior training from 31st July, registration is via our Facebook page. This will run until the end of August.

We have a vibrant social side too, keep your eye on our Facebook page for details of our Friday socials and other events.

Everyone is welcome to join us and support the teams.



@BetleyCricket Club

*Philip Hesketh*

## August Fixtures in Betley

**Sunday August 2nd** play starts at 2.00 pm

Betley CC Sunday 1<sup>st</sup> XI v Onnerley CC Sunday 1<sup>st</sup> XI

**Saturday August 8<sup>th</sup>** play starts at 1.00 pm

Betley CC 1<sup>st</sup> XI v Newcastle & Hartshill CC 1<sup>st</sup> XI

**Sunday August 16th** play starts at 1:30pm

Betley CC Sunday 1<sup>st</sup> XI v Bignall End CC 3<sup>rd</sup> XI

**Saturday August 22<sup>nd</sup>** play starts at 1.00 pm

Betley CC 1<sup>st</sup> XI v Onnerley CC 2<sup>nd</sup> XI

**Sunday August 30<sup>th</sup>** play starts at 1.30 pm

Betley CC Sunday 1<sup>st</sup> XI v Audley CC Sunday 1<sup>st</sup> XI





---

## **BETLEY LOCAL HISTORY SOCIETY**

[www.blhs.co.uk](http://www.blhs.co.uk)

Hello again to our members from your Committee. Although we look forward to meeting again, it is unlikely to be before January as there will be restrictions on the use of the room to consider: how many can meet in the space etc.

**We meet on THE THIRD THURSDAY of each month.**

Once again, I recommend to you our website [www.blhs.co.uk](http://www.blhs.co.uk) , where you can find newsletters, old photographs and quite a lot of history of Betley. Go to the **Betley Local History Society group** on Facebook to see up to date information and discussions.



@BetleyHistory

*Rhoda Farrington* (Secretary)

---



**STAFFORDSHIRE HISTORIC CHURCHES TRUST**

*CALLING ALL CYCLISTS AND WALKERS*

**Saturday 12th September** is the day chosen by SHCT for a county-wide cycle ride or walk to raise money to keep Staffordshire's historic churches, chapels and meeting houses looking beautiful and open for the future.

Choose your own route and pace and visit as many churches in the Newcastle Deanery as you can (list of all participating churches in Staffordshire here: <https://tinyurl.com/rideandstride> ). Sadly because of Coronavirus fewer churches will be open this year to welcome visitors and offer refreshments.

Arrange sponsorship and half the money raised by each participant is returned to their home church and the other half used by SHCT for urgent repair and maintenance costs. If you would like to take part contact Audrey Darlington (01270 820582) for a Sponsorship Form and other details.

# BETLEY READING ROOM

2000



2020

## ANNIVERSARY WALK Saturday 5th September

**Leaving the Reading Room at 1.00pm**

**A 3 mile guided  
circular ramble  
by field paths  
(keeping a social  
distance) and back  
for a glass of bubbly and cake.**



**Please come suitably shod !  
Children and dogs welcome**

To help with catering, please let Kevin know if you are hoping to  
join us - [kevinhamer53@btinternet.com](mailto:kevinhamer53@btinternet.com)

### It happened on this day quiz answers:

1. Napoleon Bonaparte,
2. Melinda Gates,
3. The Panama Canal,
4. Panama City,
5. Woodstock Music and Art Fair,
6. The Wizard of Oz,
7. India and Pakistan,
8. Lynmouth,
9. North Korea,
10. Anne, Princess Royal.



---

## **BETLEY METHODIST CHURCH**

Freedom to use our churches and chapels is something we have taken for granted until now. Let's be very thankful to God that the current situation is a temporary measure which we understand and not some sort of foreign oppression which has seized our land and our normal everyday living! In the meantime, we continue to conference call at Chapel, and to Zoom into St Margaret's Services and activities.

God bless until our freedom returns

**Phone-in Prayer times:**

Sundays: 6:00 pm Tuesdays and Thursdays: 8.30 pm

Contact me for phone number and PIN on 01270 820022

*Rhoda Farrington*

### **Sanctus, St Mark's Supporting Asylum Seekers and Refugees**



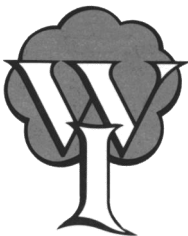
Sanitary products and toiletries can be deemed a luxury that is unaffordable for many. Sanctus relies on the generosity of supporters to collect these items for them, through collection boxes in local churches.

St Margaret's is one such church. If you would like to donate, please leave your contribution in the church porch.

<http://www.sanctusstmarks.co.uk>

---

## **BETLEY AND WRINEHILL W.I.**



Our meetings are still on hold for the moment and until further notice.

It's good news that the Village Hall is gradually re-opening, but the W.I. will only meet when we can satisfy the Government's guidelines in a way that is appropriate for our membership.

Thank you for your patience and keep in touch!

*Pam Clarke*

# Betley Show & Country Fair

The Show has been cancelled, but the Scarecrows returned ... as well as parish competitions in Photography, Tallest Sunflower, and for children: Art, and Story writing.

Every household in the parish should have received a leaflet with full details of Classes, entry rules and closing dates.

If you didn't get one, (or can't now find it!) check the Betley Show website, or ring Betley Court Farm on 01270 820229



## Betley and District Village Hall Bowling Club

We are a club which positively welcomes new members of all ages and abilities. We are open to members and are able to social bowl and have internal competitions. We are following the British Crown Green Bowling Association guidance and are able to maintain social distancing. If you are interested in becoming a member then please get in touch and we can talk through how this can happen safely. The fee for new members in 2020 is reduced to £15.

Tucked away behind the village hall, the tennis court, and the children's play area is the **Crown Green bowling club**. In its lovely village setting, it is now well established with a wide cross section of members. During normal times we have social activities, regular friendly events with other clubs, and opportunities to play in local leagues.

For more information contact:

Rachel Alcock      01270 820136 or email paulrach121@gmail.com  
Tony Turner        07721 939501 or email artturner.uk@gmail.com



## ***AN INTERESTING FIND AT ST. MARGARET'S CHURCH***

Some of you may have noticed the recent work on the church roof. This included replacing the timber cross on the east end of the main roof which had badly deteriorated over the years. The work was put out to tender and local builder Dennis Morris (Denmor Building) was awarded the contract. Dennis said he had a memory that the person who had trained him in his early career had said he himself had installed the original cross around 70 years ago. Dennis was delighted to find that when he removed the cross there were various markings on it, some in pencil and some chiselled-in, that proved this memory correct.

The photos below show what was found, though after all this time they are a bit faint—the name A Ford and the date 1950 (which are upside down). Alan Ford was indeed the person who had trained Dennis and was probably only an apprentice himself at that time, being trained by one of the other names found i.e. Robinson or Tolley. Dennis thinks they worked for a local Silverdale company, Phillips Bros. As you see from the photograph the cross is very much weather-worn but if you are interested in seeing it up close, it will be in the back of the church for a short while.



---

## **BETLEY TENNIS NEWS**

The tennis court at Betley has now re-opened but only to be used as set out below. To book the court and arrange to pick up the key, contact Judy Bettley-Smith on [07794 335354](tel:07794335354) or [judy.bs@btinternet.com](mailto:judy.bs@btinternet.com)

### **Current rules for court use**

From the LTA guidance notes the key points that you need to be aware of when playing are listed below. Complete guidelines can be found on the [lta.org.uk](http://lta.org.uk) website.

- 1) The net will be left at the correct height to avoid players having to adjust it. Please leave the net as it is.
- 2) Both singles and doubles play is now permitted with people from outside your household, as long as you remain 2m apart as far as possible – meaning that four people from different households can now play doubles.
- 3) Players do not now need to use their own tennis balls – however, if you choose to use shared balls then extra care must be taken to ensure you do not touch your face during play, and you should clean your hands before play and immediately after finishing (ideally take your own hand gel or wipes to use).
- 4) Players should still avoid using their hands to pick up tennis balls where possible - use your racquet/foot to return them to the required player.
- 5) Players should bring their own water bottle, and not share food or drink with others.

### **Subscription Rates and Hourly booking**

Subscriptions are available for 6 or 12 months starting from 1st April. Subscriptions give you unlimited use of the court including the use of floodlights to play in the evening. Email Judy Bettley-Smith - [judy.bs@btinternet.com](mailto:judy.bs@btinternet.com) to request a subscription form.

#### **Subscription Rates**

Full Adult	12 months £35	6 months £30
Adult concession*	12 months £25	6 months £20
Junior**	12 months £20	6 months £15

\* Adult concessions 17/18 years in full time education

\*\* Junior 10-16 years

#### **Hourly booking**

You may book the court on a pay as you go basis for the following fees:

Adults: £1.50 per person per hour (Adult concession: £1.25 per person per hour)

Junior: £0.50 per person per hour (Children up to 10 years: free if playing with an adult)

Bookings can be made one week ahead.






# Heat Source

## Mechanical Services Limited

Domestic and Commercial Engineers with 30 Years of Trade Experience  
for all your Heating and Plumbing needs

Including:

Central Heating Installations  
 All Gas & Oil Works Undertaken  
 Bathroom Installations  
 Boiler Servicing  
 Landlord Certificates

**Plus all emergency call outs**

Call Des on **07506 549560**

Email. **heatsource.msl@outlook.com**

Company Premises: Unit G6 Mucklestone Business Centre, Eccleshell Road,  
Mucklestone, Shropshire TF9 4FB

## Going on Holiday?

*Let us look after your cat*



*Laurels Boarding Cattery*

Brookhouse Farm,  
Madeley, Nr. Crewe,  
Cheshire. CW3 9JJ

**Tel: 01782 751279**

**Telephone for a brochure**

## COUNTRY SOFT FURNISHINGS

Established 1994

**For all your Made to Measure Blinds  
& Soft Furnishings**

Curtains

Blinds: Roman, vertical, roller, Venetian  
Box Pelmet, Swags and Tails  
Full range of fabrics, trim, tracks and poles

Free home Consultations  
Free estimates and measuring  
Domestic and commercial work  
Bespoke Made to Measure and fitting service

**Call Wendy on 01270 820779**

**Mobile: 07787 874886**

**Email: [wriggcsf@bopenworld.com](mailto:wriggcsf@bopenworld.com)**

# OsteopathyWORKS.co.uk

For

- Pain & Injury Management
- Hands on Treatment
- Rehabilitation



**Call us on: 01270 886288**

**Phoenix  
Handyman  
Services**

07957371910  
phoenixjohn51@yahoo.co.uk



**PHOENIX**

**KITCHENS  
BATHROOMS**

**JOHN**

**07957371910**



*Doddlespool Hall*

Elegant • Supported • Living



*A home from home...*

*Caring for our local community*

Doddlespool Hall,  
Main Road, Crewe. CW3 9AE  
Phone: 01270 820700

Email: [care@doddlespoolhall.care](mailto:care@doddlespoolhall.care)  
Website: [www.doddlespoolhall.care](http://www.doddlespoolhall.care)





## Ben Pointon

Door Specialist

### Garage Doors, Industrial Doors and Patio Awnings

17 New Road, Madeley

Nr. Crewe

CW3 9EX

07714 990824

01782 705407

76benpointon@gmail.com



## KeeleSU Print & Copy Shop

Your fast, friendly, local print service

Printing | Copying | Binding | Posters  
Flyers | Business Cards | Letterheads  
Photo Books | Gifts | Paper Banners  
Brochures | Wedding Invites & more!

### Graphic Design Service

Professional, high quality  
and affordable design  
custom made for you.



T: 01782 733713 E: su.print@keele.ac.uk

W: keelesu.com/printshop

f keelesuprintshop

Students' Union building, Keele University ST5 5BJ

Open to the public. Registered Charity No. 1137380

## C. W. Mottram Funeral Services Ltd

Our Family Helping Yours



Traditional, Green and Eco-Friendly Funerals

Floral Tributes / Catering Arranged

Personal Home Visits – 24 Hour Service

Arranging A Funeral and Funeral Planning Guide brochures available

### Contact Conrad Mottram

Tel Audley 01782 720057

07900492692 24Hour

www.cwmottramfunerals.co.uk

e-mail cmottramfunerals@aol.com

## Glyn Edwards **GE**

### Electrical and Security

Call **GLYN**, your local electrician  
 01782 751737 Mobile: 07765 224093  
 3 Pastoral Close, Madeley, Crewe CW3 9PU

—  
 No call out charges  
 100% Reliable Family Business  
 Free Estimates and Advice  
 Competitive hourly rate  
 —

All work carried out to 18th edition  
 NIEC Regulations and certified

Call **Glyn** for a  
 safe, reliable service



## ENVIRO SKIP HIRE

MINI – MIDI – MAXI SKIPS  
 Fast, friendly and Reliable Service

**01270 820 426**

www.enviroskiphire.co.uk



## BROOKSIDE PET FOOD

Church Lane, Betley, CW3 9AY

www.brooksidepetfood.co.uk

Tel 01270 260060 or 07973 412217

Animal feeds store for  
 all your animal needs.  
 Dog, Cat, Horse, Poultry,  
 Wild and Caged birds,  
 Agricultural Animals and many more  
*Local deliveries free of charge*

## Betley Stable Interiors

at

**Betley Court Farm CW3 9BH**

Bespoke Leather Furniture now offers  
 the same high quality in fabric options

*Also made to measure curtains, roman  
 blinds, roller blinds, venetian and verticals*

Fabrics, cushions and designer  
 wallpaper available

Full Design service on request

**Contact Jayne or Mandy on  
 01270 820479 or email:  
 stableinteriors@btconnect.com**

**www.stableinteriors.com**



## AlphaDerma

Skin Care  
CACI - non surgical  
Beauty Therapy

**Ruth Walton**

Brampton Trees, 10 Queen Street  
Newcastle-under-Lyme ST5 1ED

01782 717743

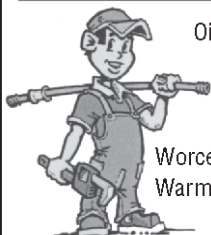
07435 961220

ruthalphaderma@gmail.com



**dermalogica**  
expert

## MES Mark Elwell Services Ltd. Heating & Plumbing



Oil Boiler Service Engineer

Oil Boiler Maintenance

Central Heating &

Bathrooms Installed

Worcester Appointed Engineer

Warmflow Appointed Engineer

Mobile:

**07767 844037**

Email:

elwell.mark56@gmail.com



## INSURANCE THAT'S ON YOUR DOORSTEP

Call our office in  
Betley on  
01270 820121



**NFU Mutual**

INSURANCE | PENSIONS | INVESTMENTS

Agent of The National Farmers Union Mutual  
Insurance Society Limited.



*Decorating*

Private & Commercial

Interior Work

Insurance Work

Free Estimates

Nelson House, Main Rd, Wrinehill

*Call Andy*

**07967 552931**

**01270 820123**

# Rooster's Day Nursery

Den Lane, Wrinehill  
Nr. Crewe. CW3 8BT

We provide a warm, caring and educational environment for your child with funded places for 3 & 4 year olds...

Ofsted registered

Our opening times are:

7.30 a.m. - 6 p.m. Monday to Friday  
51 weeks of the year

We run before and after school clubs for Betley, John Offley and Meadows primary schools.

You are welcome to visit anytime  
at your convenience

For more details phone 01270 820848  
And ask for Ruth and Lisa



## Garden Services

**For all types of  
garden maintenance  
contact Karl**

**07771 944642**



Grounds Maintenance Solutions

Call Brian for a free quote 0782 5566677

- **Fencing**
- **Decking**
- **Landscaping**
- **Hedges cut (petrol & tractor-mounted)**
- **Concrete pads for stables etc**
- **Tree work**
- **Large lawns**
- **Pasture topping**
- **& more**

visit us at [www.groundsmaintenancesolutions.co.uk](http://www.groundsmaintenancesolutions.co.uk)  
or on facebook @groundsmaintenancesolutions

Fully insured & competitively priced

## SWIMMING LESSONS

Thought about swimming lessons?

Classes ranging from Duckling to Bronze, Silver and Gold based on the ASA National Plan.

Free Taster Sessions available for all levels.

Classes at Wrinehill Mill Farm, Betley on  
**THURSDAYS and FRIDAYS**  
from 4pm onwards,  
and **SATURDAYS** from 9am  
From September **SUNDAYS** from 9am.

Maximum 6 per class so make your booking early.

Children's Parties and Private Hire also available.

To enrol call Jane on 07903 371486

Our lessons incorporate fun, games and most importantly your children will learn a life skill.




## Board of IRONING

Iron out your time.

Wash, dry or just iron.  
**Call Denise**  
**07557 967939**

Quote over the phone  
 for collection and  
 delivery service  
 to suit.

**Based in  
 Wrinehill**



**Goldmark**  
 Dog Training

## Want to have a brilliant family dog?



Learn new skills and  
 have fun with your dog



Daytime classes at  
 Betley Village Hall or  
 have private tuition



Kennel Club Good  
 Citizen Dog Scheme  
 Training

For info or bookings contact Dena Swift

**07710 228262**

[goldmarkdogs@btinternet.com](mailto:goldmarkdogs@btinternet.com)

[www.goldmarkdogtraining.co.uk](http://www.goldmarkdogtraining.co.uk)

ROBERT SC FERGUSON  
 G · A · R · D · E · N · E · R  
 AND ASSOCIATES

0 7 9 2 6 4 9 8 9 8 1

0 1 2 7 0 6 6 4 7 1 5

[robertscferguson@gmail.com](mailto:robertscferguson@gmail.com)



Tell us the date of your Garden Party and we will plan and work with you towards the day and outdoor event

# Joseph Edwards & Sons Funeral Directors

Family Run Undertaker – Established in 1882  
 Complete Funeral Service - 24 hours

144-146 Crewe Road, Alsager  
 3 King Street, Kidsgrove

**Tel: (01270) 882097**

**Tel: (01782) 775333**

Fast  
Friendly  
Affordable



M. J. F.

## Carpet and Upholstery Cleaning Service

A family Business with over 30 years experience  
Domestic and Commerical

Plus

\* Caravans \* Fully Insured \*

We use the latest equipment

\* removal of Dog and Cat hair \* \* Perfume and Deodorising \*  
\* Carpet and Fabric Protectors \* Mattress Cleaning \*  
Clean carpets last longer and look so much better!

Tel: 01782 638837 / 07950 667202

4 Brackenberrv, Newcastle ST5 9PS

Email: cfinnerty@live.com

Covering Cheshire  
and Staffordshire



# L.R.G

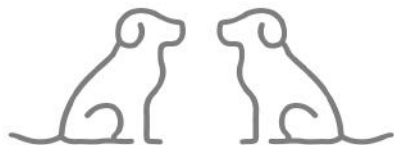
LUKE RIMMER GROUND CARE

- Garden Maintenance
- Tree Surgery
- Hedge Cutting
- Landscaping
- Weed Control
- Clearance Work

- Domestic and Commercial Undertaken
- Fully Insured, Experienced and Local

M: 07712347346 lrqenquiries@gmail.com

**City & Guilds**  
**NPTC**



## Ranworth Lodge Kennels

Luxury Boarding

Rock Lane, Muckleston. TF9 4DU

T: 01630 672333 | W: [ranworthlodgekennels.co.uk](http://ranworthlodgekennels.co.uk)







## Haycock Upholstery



Members of the Association  
of Master Upholsterers



- ◇ Re-Upholstery ◇
- ◇ Soft Furnishings ◇
- ◇ Repairs ◇
- ◇ Antique Upholstery ◇
- ◇ Replacement Cushions ◇

treverhaycockupholstery.com  
haycockupholstery@yahoo.com  
01782 712155  
Monument Lodge, Manor Rd,  
Madeley, Crewe. CW3 9PS

## mobile chiropody service



**Miss L J Davenport**  
B.Sc (Hons), M.Ch.S

**Home Visits**  
**07989 440083**



**New sockets installed**  
**Moving existing sockets**  
**Light fitting installation**  
**Moving switches / light fittings**  
**Electrical safety testing**  
**Periodic inspections**  
**New consumer unit installation**  
**Full and partial house rewires**  
**Emergency call outs**  
**Competitive prices**

**Phone or email Chris**  
**for a no obligation quote**

**Telephone: 07765480252**  
**01782752205**

**email: levey.electrics@gmail.com**

Qualified to 18th Edition Electrical Regulations (BS7671)  
Part P Building Regulations



## FLOWERS BY ALISON MOTTRAM

Flowers for all occasions  
Local Florist

Weddings - Funerals  
Flowers for any occasion

No order too small

Contact Alison  
01782 720057

[www.cwmottramfunerals.co.uk](http://www.cwmottramfunerals.co.uk)





## DOC MARTIN TREE SURGERY

**Professional Local  
Tree Specialist**

**Trees of all sizes pruned,  
felled or dismantled**

**Hedge trimming and  
leaf clearance**

**Fully qualified and insured**

**Call Martin on:**

**07894 143984**

**Email:**

**enquiries@docmartintrees.co.uk**

## NWPlumbing SERVICES LTD

38 Northwood Lane  
Clayton, Newcastle ST5 4BN

**FOR ALL YOUR PLUMBING NEEDS  
INCLUDING:**

- \*CENTRAL HEATING INSTALLATIONS
- \* BATHROOM INSTALLATIONS
- \* ALL GAS WORK UNDERTAKEN
- \* EMERGENCY CALL OUTS
- \* LANDLORD CERTIFICATES

**FOR YOUR LOCAL CORGI REGISTERED  
PLUMBING AND HEATING ENGINEER  
CALL NICK ON**

**TEL: 01782 629834**

**MOBILE: 07834 340992**

GAS SAFE NO. 220588

**www.nwplumbingservices.co.uk**

## THE 1:1 DIET

by Cambridge Weight Plan

**Want the weight gone?**  
**This is the one.**

- **Medical composition scales**
- **No contract or joining fee**
- **Private Consultations**
- **Appointments available**

**Angela Grocott**

Independent 1:1 Diet Consultant

**07899 953090**

Find me on facebook: 1:1 Diet with Angela

## CARPETS RUGS UPHOLSTERY



**CLEANINGSPECIALISTS**  
CARPET & UPHOLSTERY

**Commercial and Domestic**  
**Latest technology**  
**All areas covered**  
**Reliable, Local Business**  
**Fully Insured (NCCA Member)**

**For a FREE quote and quality service  
Call Martin on**

**07834 982097**

**Or visit our website @**

**www.h2ocleaning.co.uk**

8a Highway Lane, Keele, ST5 5AN







Need any  
building work  
undertaking?

Just contact  
Paul, your local  
builder.

*Estimates are not free –  
they cost a cup of tea!*

All building undertaken  
with a smile.

**Contact Paul anytime  
on 07990 572670.**

*Local Testimonials Readily Available.*

# Sandbach

## Mowers and Repairs

**YOUR LOCAL LAWNMOWER SERVICING  
AND REPAIR SPECIALISTS**

- WE SERVICE ALL LAWN MOWERS
- SPARES & REPAIRS FOR ALL MAJOR MAKES
- WE PROVIDE A PICK UP  
AND DROP OFF SERVICE
- WE ARE BASED IN SANDBACH  
AND SERVICE THE  
SURROUNDING AREAS

**SANDBACH MOWERS AND REPAIRS**

Unit 10, Color Me House  
Lodge Road, Sandbach, CW11 3HD

✉ : sandbachmowersandrepairs@btinternet.com

📞 : For A Free Quote & Friendly Advise  
Please Contact Paul

**01270 761408**

**or 07725 559740**



# Absolutely Fabulous hat studio

Ladies  
Designer Hats  
and  
Fascinators  
to Hire or Buy  
for all occasions

By appointment only,  
including weekends  
and evenings

Contact  
Debbie Bloor

Ambleside Lodge, Aston, Pipegate,  
Market Drayton, Shropshire

Tel: 01630 647672

Mobile: 07860 333950



**Chartered Health & Safety  
Practitioners CMIOSH  
& Acoustic  
Consultants MIOA**

**Free initial consultation  
Health and Safety Law –  
requirements**

**Environmental Noise Assessments  
(Planning / Industrial).  
Sound Insulation Testing Part E. Noise at  
Work. Health and Safety Policies. Risk  
Assessments.  
On line Safety Training e.g. Fire Safety.**

**www.sbmsafetysolutions.co.uk**

**Tel / Fax: 01270 820 533**

2 Betley Hall Gardens, Betley, Crewe,  
CW39BB

## HORNE BROTHERS

*— Dennis Cartledge —*

*When caring and understanding is most needed*

Local family owned  
independent Funeral Director



*R. Horne - M. Horne*

Contact on the following number:  
01782 720719

Golden Charter  
Funeral Plans

Floral tributes and catering - 24 hour personal service

Audley Funeral Home, Ravens Lane, Audley

Telephone: 01782 720719

Email: office@hornebrothers.co.uk www.hornebrothers.co.uk

## HAVING A PARTY?

BETLEY VILLAGE HALL  
is a GREAT VENUE

Visit our website

www.betleyvillagehall.org.uk  
to see the great range of facilities:

A lovely hall with party ambient  
lighting, audio, stage, bar  
facilities, catering, kitchen,  
separate 'break-out' room.  
Large car park and play area.

Email:

booking@betleyvillagehall.org.uk  
to arrange a visit or booking

## Paul Brayford Heating & Plumbing *For Quality Workmanship*

Gas Safe Registered Engineer

Boiler Change / Services / Repairs  
General Plumbing Works  
Bathroom Refurbishments

Telephone  
**07770 820583**  
**01630 673743**



534134

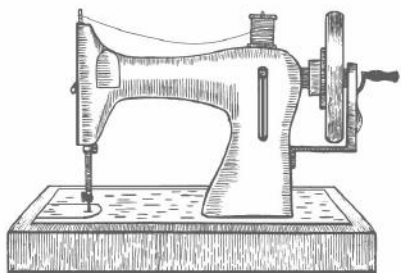
# CLARECUTS



On The Move

MOBILE HAIRDRESSER

Tel. 07771624495



## Elisabete Barbosa

Experienced dressmaker

All kinds of commissions and alterations undertaken, as well as soft furnishings.

**07800 857690**

## PAINTING

### INTERIOR & EXTERIOR

- 25 Years Experience
- Locally Based
- Quality Work
- Good Rates

Call Tony **01270 626365**  
Mobile **07507 205 492**

### ‘ Crewe’s Liners ’ Line-Dance Class

**Tuesday nights Betley Village Hall**

Beginners Hour 7.15pm - 8.15pm £4.00

Or 2 hours 7.15pm - 9.15pm £5.00

*Have fun, keep fit and make new friends*

No partner required - Dancing to all genres of music

For more info and details call Sue on 07761 350527 or

email [suzyqbell@gmail.com](mailto:suzyqbell@gmail.com)

**Qualified Line-Dance Instructor**

[www.staffordshiretreeservices.co.uk](http://www.staffordshiretreeservices.co.uk)

## specialists in tree surgery

surveys • inspections • reports

Domestic, commercial & authority contractors

### Felling of Dangerous Trees

- Treework To BS3998 • Consultancy Work
- Surveys & Reports To BS5837
- Stump Removal

**fully qualified fully insured free estimates**



Office: **01782 751369**

Mobile: **07752 160139**

3 Beck Rd, Madeley, Crewe CW3 9JF



## Betley Tots Group

Betley Village Hall  
Every Tuesday 9:45 - 11:45

Songs, activities  
and a good chat.

**Call Katie 07508 150392**



## The Swan Inn

Main Road,  
Betley,  
Crewe.  
CW3 9AB

**01270 820322**



A traditional Country Pub, with 4 cask ales.  
Graham Ecclestone  
and his Staff offer a warm welcome to all.

Function Room with wi-fi and projector  
available for Meetings or Parties.

## Beyond wealth management.

As your local True Potential Wealth Management Partner I can provide professional advice on areas including:

- Investments
- Retirement Planning
- Protection & Insurance
- Tax Planning
- Mortgages

**Contact me today:**

**Lee Spragg** *DipFA, CeMAP*  
Partner

**T** 07738 120 735

**E** leespragg@tpllp.com **W** leespragg.tpllp.com



**true potential**  
**wealth management** [www.tpllp.com](http://www.tpllp.com)

Investments can fluctuate in value and investors may not get the amount back they invest. Tax rules can change at any time. Your home may be repossessed if you do not keep up repayments on a mortgage or any other debt secured on it. Authorised and regulated by the Financial Conduct Authority. FSR number 529810. Registered in England and Wales as a Limited Liability Partnership No OC3 56611. Lee Spragg is a restricted adviser with True Potential Wealth Management.

## Betley Digital Services

**Google Ads Agency**  
for Small and Medium Enterprises

**Website Design**  
ongoing management & hosting  
(business or personal)

**[www.betley-digital.co.uk](http://www.betley-digital.co.uk)**

**Call Philip Snow on**

**01270 829056 or 07859888171**





Follow us on Facebook!

37



Dog Training and behaviour  
Introduction to working dog  
training  
One to one  
or  
Group sessions available

Contact: Hannah  
Tel: 07760 999 694  
hannah@bliashdogtraining.co.uk

# Safeclean®

BY GUARDSMAN

Dave Harrison

www.safeclean-staffordshire.co.uk



Stain Removal



Allergy Treatment



Cleaning



Protection

Telephone : 01782 703173  
Mobile: 07944 486173  
Email: dave@safeclean.co.uk

**Carpets & Rugs • Upholstery  
Curtains • Mattresses**

## Chimney Sweeping

01630 658947

petethesweep@mail.com

Member of  
the National  
Association  
of Chimney  
Sweeps



Peter Buckley BSc. Env. (Hons)  
14 Derwent Drive  
Loggerheads

## AJS GUTTER CLEANING & MAINTENANCE SERVICES

Helping to protect your most  
important investment... Your home!

Blocked gutters is the most common  
cause of damp

We offer an annual cleaning service at  
competitive prices  
from as little as £40

All rubbish removed from guttering  
Downspouts unblocked & flushed  
Soffits, fascias & cladding cleaned  
Repairs • Gutter erecting

Don't leave it until its to late, ring  
for your FREE quote

Call James on:  
01270 416212 / 07792 978896  
www.ajsguttercleaning.uk



# MONKEY TREE KENNELS

HOLIDAY HOME FOR DOGS

BETLEY



Personal attention  
Special diets catered for  
Fully insured  
Vet on-call  
Vaccinated dogs only

**Tel: 01270 820667**



**NEWCASTLE PLUMBING  
& HEATING SUPPLIES LTD**

**Suppling Staffordshire and Cheshire's trade  
and DIY for over 30 years.**

If you are looking for bathroom inspiration, then visit our showroom @  
Alsager. We have quality bathrooms, en-suits and cloakrooms on display  
Contact a member of the team who will share their expertise on helping  
your dreams become reality.

1A Linley lane, Alsager, Stoke on Trent ST7 2QP

 01270 878550 · [www.nphsupplies.co.uk](http://www.nphsupplies.co.uk) 



## SHAW CLEAN

FREE advice, quotes and fully insured.

*Tim Shaw recommended & used by leading  
home furnishing retailers since 1997.*

- CARPETS
- UPHOLSTERY
- LEATHER
- RUGS
- CURTAINS
- MATTRESSES
- STAIN REMOVAL & PROTECTION
- STONE
- TILE & GROUT
- WOOD
- DRIVEWAYS
- PATIOS
- DECKING

## SUPERB CLEANING



**0800 612 8817** Cheshire Areas • **07976 559 072** • [www.shawclean.co.uk](http://www.shawclean.co.uk)



Painter  
and  
Decorator

**A.N.  
HIGGINSON**

4 Primrose Dell,  
Madeley  
Nr. Crewe CW3 9ES

**Telephone:  
01782 750375**



**Owens  
Memorials**

Traditional ~ Modern  
Individual

for Cemetery and Churchyard  
covering all districts

**Tel: 01630 654135**

for help and advice  
Quote Ref. P.M. 10

**21 Queen Street, Market Drayton**

**Shires** accountants

- Self-Assessments Tax Returns
- Limited Company Accounts
- Sole Traders
- Construction Industry Scheme CIS
- VAT & Personal Tax
- Capital Gains & Corporation Tax
- Local Accountants
- Family Business Specialists

We do not charge for meetings  
or general advice & we offer  
Free Consultations & Fixed Prices

Checkley Lane  
Wrinchill  
Nr Crewe  
CW3 9DA

**We work harder for you!**

**01270 820273**

**Info@cheshireaccountants.net**



**Betley Tea Room**

**Betley Court Farm, Betley,  
CW3 9BH**

Closed Mondays  
Tuesdays – Fridays & Sundays  
Open 10am-4pm  
Saturdays  
Open 9am-4pm

Please call 01270 820229 for  
booking enquires.  
Private events catered for also.

# ELMSIDE NURSERIES

Landscape Gardeners  
Planting Schemes with own grown  
quality plants and shrubs  
and garden maintenance

Plants for hanging baskets  
now in stock

Pet Food and Wild Bird Food

Coal, Smokeless Coal, Logs and Sticks

**Phone: 01270 820352**  
Let us know your requirements



## Move Home Faster

- Excellent value property conveyancing
- Instant Home Valuations
- EPCs and Floorplans
- Mortgages

**Get an instant  
quote NOW**

For your Free Conveyancing  
Quote, contact us on

**www.movehomefaster.co.uk**  
Telephone - 01270 263 263

Move Home Faster Limited,  
Lea House, 5 Middlewich Road,  
Sandbach, Cheshire. CW11 1XR.



small pets

*Your animal's health is our priority*



01270 820007 | Main Road, Betley



horses

**Digital x-ray, ultrasound & endoscopy, same day results  
for blood tests from our in house lab**

Friendly and professional service  
Vaccinations & boosters  
Microchipping & health checks  
Fully equipped operating theatre & hospitalisation facilities  
Laparoscopic / keyhole surgery  
Airway surgery  
Advanced soft tissue and orthopaedic surgery  
Fully equipped mobile service for horses  
Acupuncture

*Modern Diagnostics  
Full Surgical Facilities  
Keyhole Surgery*



**poolfarmvets.co.uk**

RCVS accredited small animal  
and equine practice



**01270 820007**

Main Road, Betley, Nr Crewe, Cheshire CW3 9AB

